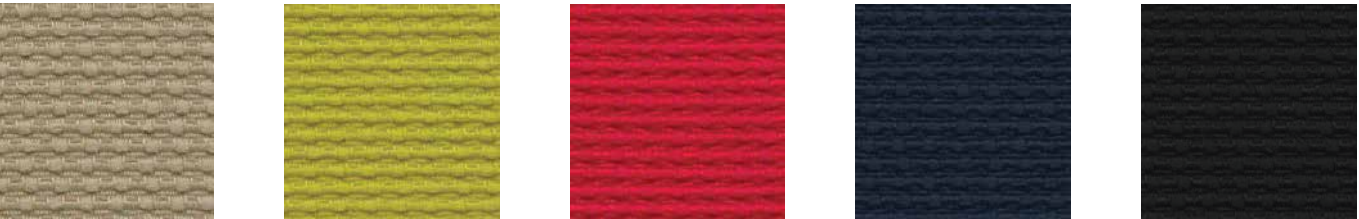


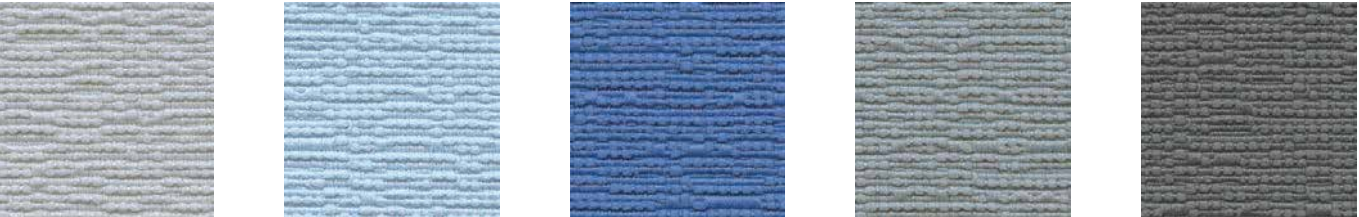


PURPOSE 1302 – Biodegradable* Grade 1



Plan 1181 Mission 1190 Desire 1187 Objective 1193 Reason 1194

RESOLVE 1301 – Biodegradable* + Bleach Cleanable Grade 1

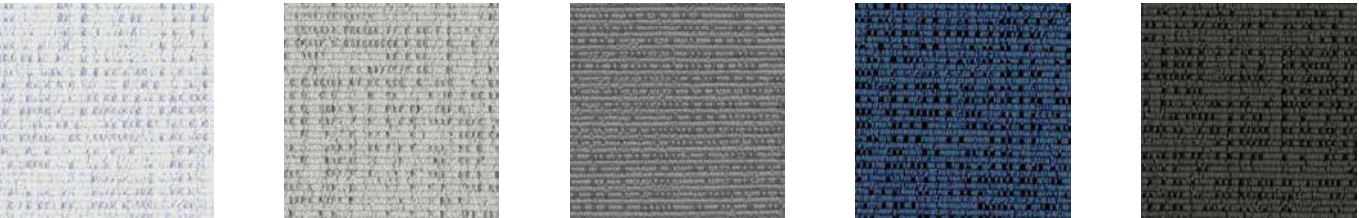


Effect 1203 Intention 1196 Plan 1198 Manage 1204 Fortitude 1205

MARIN 1300 – Ocean Waste Content Grade 1



Earnest 1194 Bold 1199 Pelican 1141 Red Snapper 1151 Carrageen 1150



Ice Edge 1145 Dolphin 1147 Grey Whale 1148 Benthic 1157 Blacktip 1149

BEEHAVE 3948 – Terratex Grade 1

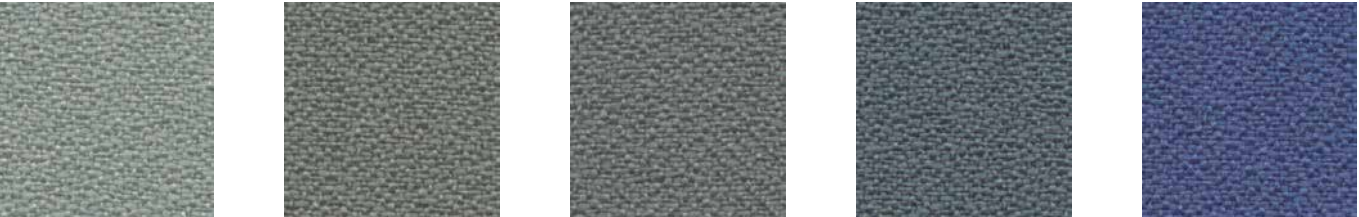


Gris 2701 Pear 2698 Currant 2802 Lapis 2807 Slate 2703

ANCHORAGE 2335 – Terratex Grade 1



White 2664 Vanilla 2130 Straw 2034 Angora 2035 Goose 2049



Slate 2017 Asteroid 2053 Wolf 2027 Quarry Blue 2026 Thistle 2085



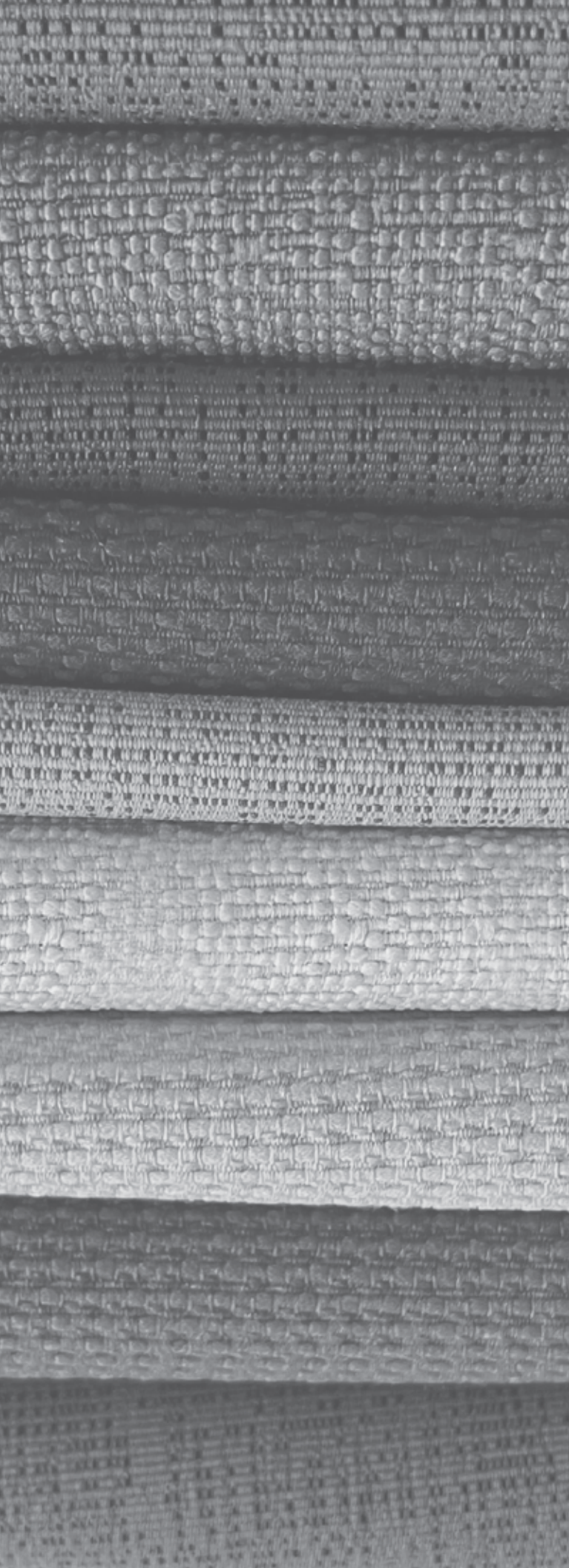
Pool 2842 Waterfall 2691 Lapis 2094 Cobalt 2045 Midnight 2025



Green Apple 2087 Willow 2028 Deep Water 2051 Pine Needle 2022 Graphite 2079



Sunshine 2082 Pumpkin 2021 Geranium 2084 Red Delicious 2014 Onyx 2016



Sustainable Fabrics



Specifications

Pattern	Content	Sustainability	Width	Abrasion
Anchorage 2335	65% pre-consumer recycled polyester 35% post-consumer recycled polyester	TERRATEX	66" min. useable	250,000 double rubs cotton duck
Beehave 3948	65% pre-consumer recycled polyester 35% post-consumer recycled polyester	TERRATEX	54" min. useable	75,000 double rubs cotton duck
Marin 1300	90% post-consumer recycled polyester including ocean waste 10% polyester	OCEAN WASTE	67" min. useable	100,000 double rubs cotton duck
Purpose 1302	100% post-consumer recycled biodegradable polyester	BIODEGRADABLE	67" min. useable	50,000 double rubs cotton duck
Resolve 1301	100% post-consumer recycled biodegradable polyester	BIODEGRADABLE	67" min. useable	50,000 double rubs cotton duck

Performance



Flammability
ASTM E84 Class I or A
CA Technical Bulletin 117-2013 Section 1

All patterns meet or exceed ACT performance guidelines.

*Certification Marks owned by the Association for Contract Textiles, Inc.

Cleaning Code

Standard Care Label W-S. Clean with water based cleaning agents, foam or pure, water free solvents. Vacuuming or light brushing is recommended to prevent dust and soil buildup. May also be disinfected with hydrogen peroxide, alcohol, and quaternary ammonium (quat) based cleaners.

Bleach Cleanable (Resolve only) - May be cleaned with a 10% bleach-to-water solution. Rinse well after cleaning.


Miscellaneous

- Application testing of these products is recommended.
- Colors may vary between dye lots.
- These are directional fabrics.

Proudly woven in North America supporting our local communities.

Colours and finishes shown are digital representations only; refer to individual samples for accuracy. To order individual samples, please contact your BRC representative. BRC reserves the right to modify the product without notification at any time. Refer to <https://brc.group/resources/finishes-materials> for the most up to date finish and colour information.

Sustainability

 **Anchorage and Beehave are 100% recycled and recyclable**
Terratex is a registered trademark of Duvaltex

OCEAN WASTE CLEAN IMPACT TEXTILES™ tackle one of the most pressing environmental issues we face today: pollution of oceans by plastics.


SEAQUAL INITIATIVE By partnering with the SEAQUAL INITIATIVE, we transform ocean waste into amazing textiles.

BIODEGRADABLE CLEAN IMPACT TEXTILES™ address the daunting problem of how to deal with polyester fabric at the end of its useful life.

Biodegradable* in landfill after 1,278 days (tested under ASTM D5511)

Duvaltex is an official and authorized advertiser of SEAQUAL® YARN, the SEAQUAL INITIATIVE and their related trademarks, under licence agreement. Only SEAQUAL licensees are permitted to publicly advertise details about SEAQUAL trademarks.

*Rate and extent of biodegradation into elements found in nature is 91% after 1,278 days under ASTM D5511 (Anaerobic Biodegradation of Plastic Materials Under High Solids Anaerobic Digestion Conditions). The test was done with the same component (PET) polyester and biocatalyst additive. No evidence of further degradation.

 These patterns are included in the underwriters laboratory panel fabric recognition program. Additional testing of this U.L. recognized fabric is not required on approved panels from participating manufacturers.

brc www.brc.group

24 Armstrong Avenue,
Georgetown Ontario Canada L7G 4R9

Phone (905) 873-8509 | Toll Free (877) 260-4309
Fax (905) 873-9165 | Email: info@brc.group